

Cincinnati Parks School Programs



RESERVE NOW!

Current prices in effect until December 30, 2011.

2011



2012

Cincinnati Parks Education Services

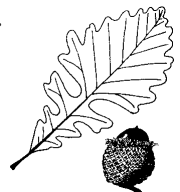
In the pages of this guide, you'll find Park Naturalist-led programs for students of all ages and levels of ability. Use the guide to locate those programs that best complement your classroom lessons and to help you schedule a program or field trip for your class. *See you out in the parks!*

We operate 5 Nature Education Centers, and also offer programs out in neighborhood parks. For information about a specific center, call the Naturalists at the numbers below. For information or reservations for Krohn Conservatory tours, call Krohn directly at the number below.

For general information and reservations, call the Bettman Center.

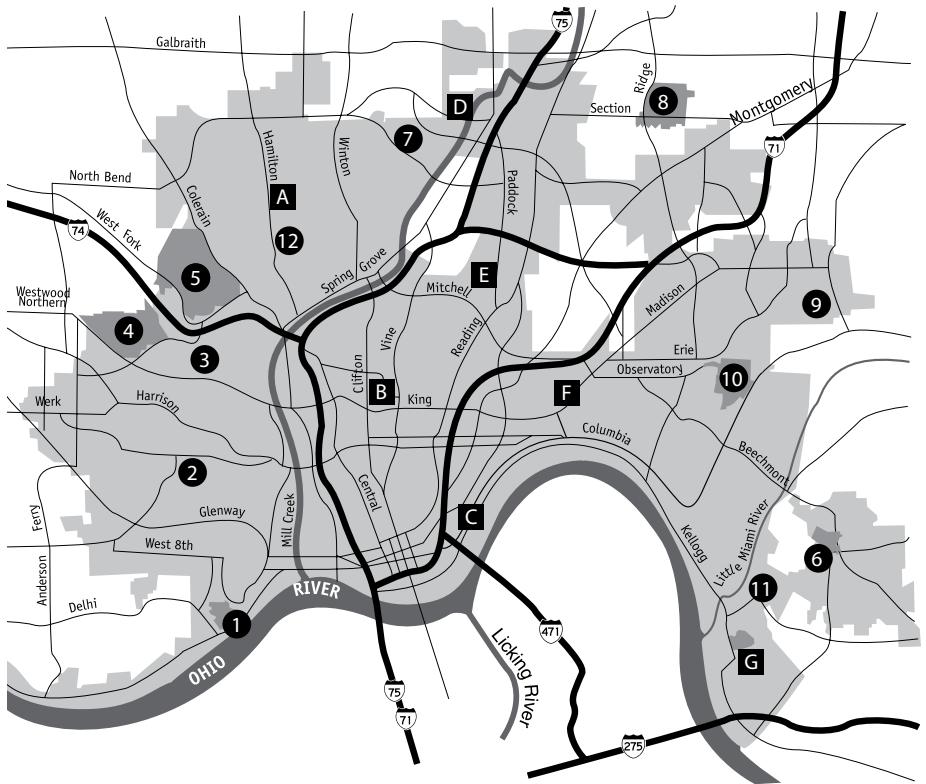
Avon Woods Nature Ctr. Inner-City Outreach	4235 Paddock Rd. Paddock Hills / N. Avondale	861-3435
Bettman Natural Resources Ctr.	4 Beech Lane O'Bryonville / Evanston	321-6070
Caldwell Nature Ctr.	430 W. N. Bend Rd. Carthage / Hartwell	761-4313
California Woods Nature Ctr.	5400 Kellogg Ave. California	231-8678
Krohn Conservatory	1501 Eden Park Dr. Eden Park / Walnut Hills	421-5707
LaBoiteaux Woods Nature Ctr.	5400 Lanius Lane College Hill	542-2909
Trailside Nature Ctr. and Wolff Planetarium	3251 Brookline Ave Clifton (Burnet Woods)	751-3679

Reasonable accommodations will be made upon advance request.
Call 321-6070 (Nature Centers) or 421-5707 (Krohn).
Wheelchair hikes are possible at Caldwell Nature Center.



Welcome

to the natural heritage of your Cincinnati Parks.



Parks & Preserves with Trails

- 1 - Mt. Echo Park
- 2 - Glenway Woods
- 3 - Brodbeck Preserve
- 4 - McFarlan Woods (Mt. Airy)
- 5 - Mt. Airy Forest
- 6 - Stanbery Park
- 7 - Seymour Preserve
- 8 - French Park
- 9 - Little Duck Creek
- 10 - Ault Park
- 11 - Magrish Preserve
- 12 - Buttercup Valley / Parkers Woods

Nature Centers

- A - LaBoiteaux Woods
- B - Trailside (Burnet Woods)
- D - Caldwell
- E - Avon Woods
- F - Bettman
- G - California Woods

Visitor Center

- C - Krohn Conservatory

To Schedule a Program

TO SCHEDULE A PROGRAM; Call 321-6070 ext. 10.

Programs fill quickly, so please schedule at least 2 weeks in advance. If you have any questions about program content, call the Nature Center you plan to visit.

When you call, please have ready:

- *Several preferred dates already cleared with administration and buses, since we cannot put "holds" on dates*
- *Preferred program and location, and an alternate*
- *The number of children and adults coming*
- *School address and grade level*
- *Contact information; name, e-mail, phone & FAX numbers*

GROUP SIZES / CHAPERONES

The number of children we can accommodate varies. On most days, each Nature Center can receive 3 average classes (about 60 - 65 children) simultaneously. If you are planning to bring more than 65 children, we may need to schedule multiple centers or multiple days.

Each class needs to be accompanied by a minimum of 1 teacher; 2 adults per class is preferred. The Naturalists rely on you to control the group and be with them during all the activities.

FEES / PAYMENT: Reserve now to lock in 2011 prices!

2011-12 school year reservations completed by Dec. 30, 2011, will not be subject to any 2012 fee increases on winter or spring programs.

The current program fee, regardless of length, is \$3.00 per child or adult chaperone for schools located within Cincinnati; \$5.00 per child / adult for schools outside Cincinnati city limits. All teachers attend FREE. Programs with consumable supplies may cost more and are noted in program descriptions.

Minimum Fee: equivalent to 20 students / paying adults.

Payment can be made by voucher / P.O., or by credit card, money order, cashier's check, or school/business check (payable to: Treasurer, City of Cincinnati) in advance or at the time of the program. **We regret that we can no longer accept personal checks.**

CONFIRMATIONS / CANCELLATIONS

Approximately one week prior to your program, a Naturalist will contact you regarding Program details. We do not send out written confirmations.

Except in cases of weather emergencies, cancellations must be made at least 48 hours in advance of your scheduled visit, or a \$20.00 service fee will be charged. We do proceed with programs in cases of rain, normal winter cold, etc.

To Schedule a Program

LUNCHES

Lunches should be marked with each child's name, and include a drink (The Nature Centers do not have pop machines). Depending on weather, children will eat outside at picnic tables or inside the Nature Center.

DRESS FOR SUCCESS

Come prepared for the weather and count on being outside for at least part of the visit. The true value of a Nature Center is in its forests and fields; we want the children to experience nature outdoors.

Children should wear rain gear or coats as the weather requires, sturdy closed-toe shoes (no sandals or flip-flops), and hats and gloves in cold weather.

PARKING

FREE parking is available at all of the Centers and Krohn Conservatory.

TYPICAL PROGRAM / TIMES

We can advise you on a suitable length for the grade level and program you select.

Programs for preschool and first grade are usually shorter, lasting about 2 hours. Half-day programs can be either morning or afternoon, and can include a picnic at the center in suitable weather. A half-day program consists of either a hike, or a hike with an indoor program.



Most programs, except for the youngest students, last 3 - 4 hours and include a lunch break. They typically consist of an indoor program, a hike related to the program theme and various hands-on activities. Most of these programs can also be offered in a half-day format, however some activities will be dropped due to time constraints.

ACCESSIBILITY

Reasonable accommodations are available upon advance request. Wheelchair-accessible hikes are available at Caldwell and California Woods Nature Centers (some indoor program elements are not wheelchair accessible at California Woods). Call the Centers for details. Program content and presentation style can be adjusted to accommodate children with learning delays or disabilities, or Naturalists will work with teachers to create an appropriate program.

To Schedule a Program

CUSTOMIZING

Park Naturalists are happy to work with you to customize our programs to best fit your instructional needs.

If you would like specific vocabulary, concepts, activities or information emphasized, please call the appropriate Center as soon as possible to work out those specifics.

KIT-FRIENDLY AND CONTENT-STANDARD BASED

Using a kit-based science curriculum? Park Naturalists can provide your class with a program that reinforces kit concepts and provides examples from local ecosystems. Call the appropriate Center to discuss your program specifics.

Most of the programs listed in the following pages have been designed to address current State Academic Content Standards. Please call the appropriate Center for more information on how a specific program correlates to the Academic Content Standards .

ABOUT GRADE LEVELS

Several programs listed show a broad grade range. For these, we do different variations appropriate for the different grades or ability levels. Center Naturalists can explain how they would adjust the program for your class. For the youngest children, the **Nature Programs for Preschoolers** brochure is available by calling 321-6070, ext. 10.

OUTREACH

Programs are designed for presentation at the Nature Centers. However, some topics (as indicated in their descriptions by the icons shown below), can be handled as outreach programs in

neighborhood parks  or at a **school**. 

Of course, activities will be modified; what can be done depends on the resources available at the outreach site. Call the appropriate Nature Center to discuss details of what can be offered at specific locations and how programs would vary from what is described.

Outreach Fees:

At Parks: \$3.00 (schools within Cincinnati) or
\$5.00 (schools outside Cincinnati) per child / adult chaperone

At Schools: \$75 first program (inside city limits);
\$100 first program (outside city limits);
\$25 each additional program, same topic, same day

Nature Programs for All Ages

Available All Seasons at All Nature Centers

These programs are available year-round at most Nature Centers. Their content and presentation styles can be modified for children of all ages.

SEASONAL HIKES AND PROGRAMS



Nature reinvents itself with each changing season. These hikes and programs explore and explain the changes and phenomena associated with the particular season of your visit. Included are these favorite topics: Why leaves change color and fall in Autumn; How animals prepare for or survive Winter; Spring flowers; pollination, and Bird migration.



LOCAL WILDLIFE



Learning to identify and appreciate local wildlife opens doors to understanding the natural world and how humans and wildlife interact. Most programs use a combination of taxidermy mounts and small live animals (snake, turtle, toad). The emphasis can vary to suit your needs and objectives.

BASIC NATURE TOPICS



Planning a unit on birds, mammals, reptiles, insects, trees, or wildflowers? A Naturalist program can bring it to "life" with taxidermy or mounted specimens, slides, lore and information, and hands-on exploration in a park or other natural area.

ENDANGERED SPECIES



How do plants and animals become endangered? What animals are endangered in Ohio? What are people doing about it? A Naturalist talk with hands-on games and activities answers these and other questions.

Caldwell School Programs

NATIVE AMERICANS



Season Available: F, W, S

Grade Level: Pre-K – 3

This interactive program focuses on the everyday life of an Ohio Native American child in the late 1700's, including food, clothing and shelter. Students experience daily life skills, pictographs, games and stories. The hike stresses Native Americans' historic uses of forest resources.

Note: To include daily life style activities, program must run a minimum of 2 hours.

ADAPTING TO HABITATS



Season Available: F, W, S

Grade Level: K – 2

Come discover the differences between living and non-living things as we learn how plants and animals interact with their physical environment. We investigate the basic needs of organisms, how their habitat fills those needs and the important role of adaptations. During the hike, students explore three different local habitats.

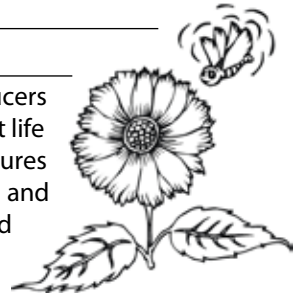
THE GREEN TEAM



Season Available: F, S

Grade Level: 3 – 6

Students investigate the unique role of plants as producers of food through photosynthesis. A hike can include plant life cycles, pollination, seed distribution, how plant structures are related to function and interactions between plants and animals. Fall programs can include leaf collections and the use of classification keys.



WEATHER 101

Season Available: F, W, S

Grade Level: 3 – 6

A lively series of demonstrations introduces to students how air, water and heat produce Earth's weather. Students learn how to read a weather map. They perform experiments introducing air pressure, convection currents, and how different types of clouds bring different types of weather. On the hike, we look for the effects of weathering and erosion and measure temperature in various locations.

Caldwell School Programs

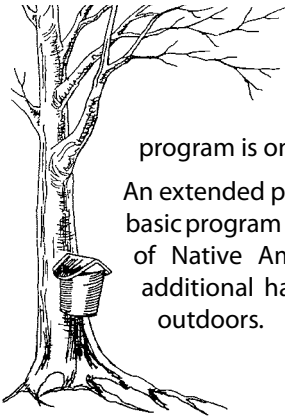
ECOLOGY: WHAT'S THE CONNECTION?

Season Available: F, W, S **Grade Level: 3 – 5**

Everything is connected! Students learn how organisms survive in their ecosystem and how the energy all organisms need flows through the system. As students explore food chains and food webs, we discover what roles everyone plays in an ecosystem and that everything is important.

MAPLE SUGARING

Season Available: February **Grade Level: Pre-K – 5**



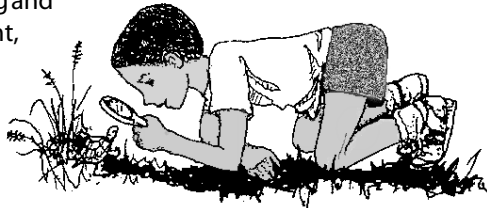
Experience how Sugar Maple trees produce sap and why it is collected for syrup only during this brief season. Watch us collect the sap and cook it down. Children taste maple sap in three stages of production. The basic program is one hour in length with half taking place outdoors.

An extended program lasting up to 3 hours, for grades K - 5 includes the basic program plus a hike to tap a Maple tree, an interactive demonstration of Native Americans' use of maple sap, science experiments and additional hands-on activities. Half of the extended program occurs outdoors.

FOSSILS, SOILS AND CINCINNATI GEOLOGY

Season Available: F, S **Grade Level: Pre-K – 8**

Students participate in an interactive introduction and an exploratory creek hike to find Cincinnati's famous fossils. A two hour program for Pre-K through Kindergarten covers fossils only. Grades 1 and older investigate geologic processes such as rock formation, soil types, weathering and other forces, past and present, that shape Cincinnati.



California Woods School Programs

LOCAL WILDLIFE



Season Available: F, W, S

Grade Level: Pre-K – 2

Students are exposed to the wildlife of the Cincinnati area. An indoor presentation focuses on how our local wildlife are adapted to survive in a specific habitat and touch briefly on animal classification. A hike reveals animal homes and food sources. Suggested program times: Pre-K up to 2 hours, K - 2 up to 3 hours.



WONDERS OF THE SEASONS

Season Available: F

Grade Level: Pre-K – 2

Fabulous Fall: Learn all about the wonders of fall. Enjoy a puppet show highlighting how animals prepare for winter, take a hike to explore the season in person, and make a fall-themed craft. This program is typically 1.5 – 2 hours long.

Season Available: S

Grade Level: Pre-K – 2

Spring Into Spring!: After a long winter, explore the wonders of spring renewal in nature! Enjoy a puppet show that focuses on how local animals got through the winter and prepare for spring. Take a hike to explore the wonders of the new season, and make a spring-themed craft. This program is typically 1.5 – 2 hours long.

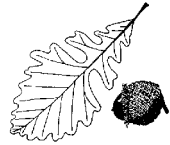
“TREE”-MENDOUS TREES



Season Available: F, S

Grade Level: Pre-K – 5

This program is a well-rounded introduction to all aspects of the plant kingdom. An outdoor hike is geared for the season. The indoor presentation focuses on plant physiology and photosynthesis.



HISTORY AND MYSTERY OF MAPLE

Season Available: February/Early March

Grade Level: Pre-K – 5

From the Native American, to pioneer, to current sugar farmers, we will taste and experience the magic of maple sugaring. Learn about the fascinating process trees use to make sweet sap and why this is the only time per year we can use it. Students assist the Naturalist in tapping trees, collecting sap, and witness the transformation from sap to syrup. Suggested program times: Pre-K up to 2 hours, K - 5 up to 3 hours.

California Woods School Programs

THE ECOLOGY OF HABITATS

Season Available: F, W, S **Grade Level: 2 – 8**

Students are introduced to local habitats in the Cincinnati area and how basic ecological principles apply to each of these habitats. An indoor presentation focuses on predator/prey relationships and animal structures. An outdoor hike includes an in-depth, hands-on study of the forest, meadow and creek habitats.

CYCLES AND RECYCLES



Season Available: F, W, S **Grade Level: 2 – 8**

Students will discuss cycles in nature including life cycles of amphibians (toads/frogs), insects (honeybees), plants, water, oxygen and carbon dioxide. An interpretive hike investigates the seasonal cycles of nature. An indoor program focuses on a cycle that humans invented, generating and recycling our solid waste.

LANDS ACROSS TIME - THE GEOLOGY OF CINCINNATI

Season Available: F, W, S **Grade Level: 3 – 6**

Students use interactive demonstrations to learn about the rock cycle, soils, glaciation, freeze/thaw processes and fossilization. An exploratory hike focuses on erosion and give children an opportunity to take home fossils from Lick Run Creek. *Program can be customized to the teacher's lesson plans. Sturdy footwear is required.*



AN OLD WAY OF LIFE: A PIONEER EXPERIENCE

Season Available: F, S **Grade Level: 3 – 6**

Students gain knowledge of pioneer ways and experience a typical day in the life of a pioneer child. Students will realize how lifestyles, religion, customs and traditions helped shape Cincinnati. An interactive hike introduces students to characters of that period.

WEATHER: WILD OR MILD?



Season Available: F, W, S **Grade Level: 3 – 6**

Students become junior meteorologists as they learn how to make predictions about the weather. Using a weather map and symbols, the students interpret patterns most often encountered in our region. Weather demonstrations and experiments are performed by the students.

LaBoiteaux Woods School Programs

THE WONDERS OF FALL

Season Available: F

Grade Level: Pre-K – 3

This program focuses on how plants and animals meet their survival needs in the Fall. Students walk the trails and complete fun activities to study food sources, life cycles and seasonal changes in the woods. A puppet show is included in this program.

THE REAL WORLD

Season Available: F, W, S

Grade Level: Pre-K – 6

Does your class know more about the Internet than their backyard? Enjoy a grab-bag of the Naturalists' favorite activities with the emphasis on fun and exploration (They'll soak up lots of information as well).

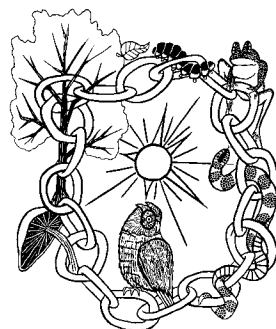
Wear old clothes and sturdy shoes for woods exploration. Touch nature, meet an animal or two and play a game.

WEB OF LIFE: ECOSYSTEMS

Season Available: F, W, S

Grade Level: 4 – 6

A hands-on program in a forested setting, where students observe the interactions and interdependencies of native plant and animal life. Activities also illustrate human connections to the ecosystem and the significance of personal actions to the web of life.



SPRING MAGIC

Season Available: S

Grade Level: Pre-K – 2

Celebrate the season of new life with a trail walk and activities that illustrate nature's important cycles. Children discover how plants and animals meet their basic needs in various local habitats. A puppet show introduces the program.

PLANTS ARE FUN-DAMENTAL

Season Available: F, S

Grade Level: 2 – 4

Explore on a hike how a wide variety of plants provide food and shelter to animals, and see how they grow and change through the seasons. Investigate the parts of a flower and the importance of pollination. Learn about seed germination and "make and take" a growing experiment. Dichotomous leaf keying, class leaf collections, a craft or a game can be included.

LaBoiteaux Woods School Programs

NATIVE AMERICAN LIFE

Season Available: F, W, S **Grade Level: Pre-K – 3**

This interactive program focuses on the everyday life of an Ohio Native American child in the late 1700's, including food, clothing and shelter.

Students experience daily life skills, pictographs, participatory games, and dances. The informative hike stresses Native Americans' historic uses of forest resources.

BRINGING LITERATURE TO LIFE: SURVIVAL LITERATURE

Season Available: F, S **Grade Level: 4 – 8**

Hatchet, My Side of the Mountain or *Danger Along the Ohio* comes to life as students hike to locate sources of food and water, build an emergency shelter in the woods, and try essential outdoor skills like fire building, reading maps and using a compass. The program builds excitement, deepens understanding and instills self confidence. Read the book before the program.

RECYCLING



Season Available: F, W, S **Grade Level: 1 – 8**

"Reduce, Reuse and Recycle" is also Nature's way. Students learn about natural resources and cycles, vermicomposting (with worms), recycling and other ways to minimize waste through a hike and fun activities. A bus tour of Rumpke Landfill can be arranged on some Wednesdays.



THE UNDERGROUND RAILROAD, RAVINE TO FREEDOM

Season Available: Jan. - Early March **Grade Level: 5 – 8**

LaBoiteaux Woods was on the path of an important network of Underground Railroad activity in College Hill during the 1840s-1850s. Students walk part of a route used by escaping slaves on a rugged, 75 minute trail hike through the winter woods. Indoor activities include a simulated journey to freedom and using maps to trace escape routes. Our local history brings the broader history of the Underground Railroad to life.

Trailside School Programs

CINCINNATI SKIES

Season Available: F, W, S

Grade Level: 1 – 4, 5 – 8, 9 – 12

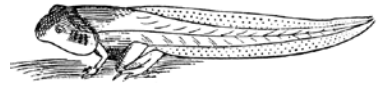
Experience the oldest planetarium west of the Allegheny Mountains. Discover stars, constellations, galaxies and more. Learn the stories behind Orion, the Big and Little Dippers and many others. Includes Native American, African, Greek and Roman legends. Students participate in hands-on activities revolving around planets, moon phases and constructing star charts for nighttime viewing.

AQUATIC ECOSYSTEMS

Season Available: F, W, S

Grade Level: 2 – 8

The Burnet Woods Lake serves as our outdoor laboratory as we explore the plants and animals that comprise this unique ecosystem. Hands-on activities engage students in analyzing water quality, investigating aquatic food chains, the water cycle and more. Problem solving skills are used to assess the health of the lake and address pollution issues.



PLANTS: SEEDS TO TREES



Season Available: F, S

Grade Level: 1 – 6

This exciting program functions as a primer on plant life. Students will learn about the structure, function and reproduction of local trees and wildflowers as they explore the wooded hillsides of this urban forest. Through the use of hands-on activities, students are exposed to the process of photosynthesis, seasonal changes, seed dispersal and more.

HABITATS AND ADAPTATIONS

Season Available: F, W, S

Grade Level: 1 – 6

This program introduces students to our local habitats, their composition and how plants and animals have adapted to live within them. Through a combination of exploration, fun-filled activities and live animal demonstrations, students gain a greater understanding of the world around them.



Trailside School Programs

CLASSIFICATIONS: THE KEY TO UNDERSTANDING



Season Available: F, W, S

Grade Level: 3 – 5

Through the use of classification keys, students uncover the characteristics that separate plants and animals into different classes, orders and families. Animal mounts, skulls, leaves and seeds are used to sharpen our new sorting skills.

RECYCLING AND RESOURCES

Season Available: F, S

Grade Level: 2 – 6

Students explore ways to Reduce, Reuse and Recycle our natural resources through hands-on and interactive activities. Fun and active techniques are employed to engage students in the recycling of solid waste, nature's recycling methods and composting.

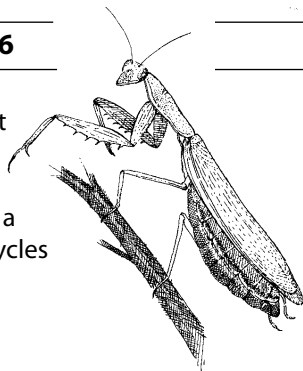
A BUG'S LIFE



Season Available: F, S

Grade Level: K – 6

They're creepy, crawly and all together fascinating! Discover the exciting world of a bug's life, as we look at the most successful group of animals on the planet. From the depths of Burnet Woods to the butterfly gardens of Trailside Nature Center, this program offers a unique opportunity to examine metamorphosis, life cycles and the unique roles they play in our day-to-day lives.



LOCAL HISTORY TOURS



Season Available: F, S

Grade Level: 9 – 12

Have a bus and need a tour guide? A Cincinnati Park Board Naturalist can bring your next field trip alive with exciting visits to destinations throughout the city. Tours include: Memorial Pioneer Cemetery and the founding of Cincinnati; Along The Waterfront, the Rise of the Queen City; Inclines and Overlooks, and Escaping the Basin. Or explore the exciting history behind the city's older parks and diverse neighborhoods. Tours can be customized to meet your educational needs.

Nature Connections

Research shows that students focus better, retain content and have more academic success when learning combines with access to natural spaces. Realizing that some Cincinnati schools do not have resources for field trips, the Cincinnati Parks created the *Nature Connections* program. With initial support from an Ohio Environmental Education Fund grant, this FREE outreach program serves at-risk and economically disadvantaged students in grades 4 – 6.

Activities are hands-on, exploratory and designed to address Cincinnati curriculum and Ohio standards. Classes receive three seasonal 90-minute Naturalist visits on the same topic. In Fall, students are introduced to their local park with an exploratory hike, team-based investigations and active simulations. In Winter, Naturalists visit the classroom and present hands-on activities to deepen students' understanding of the program material. In Spring, students walk to the park near their school for further field investigations and culminating activities that provide assessment on student learning.

As part of each visit, students will use scientific tools, and activities will be inquiry based. Teachers are given pre-visit activities in the Fall to introduce the curriculum and post-visit projects after each visit to extend curriculum objectives.

To be eligible for participation, schools must:

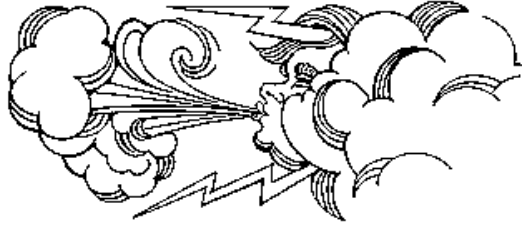
- be located within the City of Cincinnati (schools can be public, charter or private)
- have at least 80% of their students enrolled in the federal lunch program
- be located within walking distance of usable public greenspace, or a City of Cincinnati Park or Nature Center
- have classes in grades 4 – 6



Nature Connections

Program Themes for Nature Connections are:

Grade 4: **Weather or
Habitats and
Adaptations**



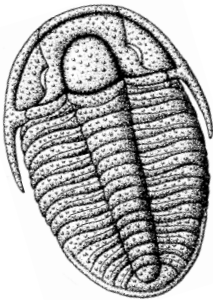
Grade 5: **Ecosystems and Cycles**



Grade 6: **Geology or
Trees and Keys**



To learn more about Nature Connections, or enroll your class in the program, call **861-3435** or **321-6070**.



"I was very impressed with the presenters because I have a 'challenging classroom' but the lessons held my kids' attention for over 1-1/2 hours."

~ Teacher at Schwab School

Even More Education Services

What About Preschool?

Your Cincinnati Parks offer a menu of seasonal and school-year programs for preschool (ages 4 & 5) classes. To receive a Preschool brochure, please call **321-6070** or visit our website at www.cincinnatiaparks.com

Accessible Treehouse Programs

Everybody's Treehouse in Mt. Airy Forest provides a new perspective on the forest for people of all ages and abilities. Wheelchair accessible, the Treehouse can be the highlight of an educational program for your special needs class.

Park Naturalists meet you in Mt. Airy Forest; much of the program would take place in the Oak Ridge picnic / playground area (equipped with accessible bathrooms in season). Program topics and activities appropriate for your students can be worked out with the presenting Naturalist. Whatever is decided, your students will both learn and have fun.



Service Learning / Community Service

Park Naturalists work with you to set up Service Learning projects for your class. Topics that could be covered include :

Alien Plant Species

Instruction on the ecological damage caused by invasive non-native plants, information on their origins and how to recognize them, and work projects restoring natural habitat through non-native plant removal.

Water Quality Testing

Information on water quality and its importance to aquatic life, instruction on using a biotic index and chemical test kits, and work projects gathering water quality data from park streams or Burnet Woods Lake.

Biologic Inventories

Instruction from a Naturalist on field identification of targeted species and surveying techniques, and work projects locating and identifying species and creating a database of findings.

On Using Parks

With over 5,000 acres preserved in more than 150 park areas, Cincinnati's Parks are among the most extensive and best regarded in the nation. Park sizes range from small neighborhood gardens to 1,471-acre Mt. Airy Forest, one of the nation's largest municipal forests. Fifty-nine parks contain over ten acres; twenty-one comprise fifty acres or more. Spread geographically throughout the city, Cincinnati Parks grace every neighborhood. If your school is located within Cincinnati, there is a park near you.

Your closest park might be a traditional developed park, an undeveloped nature preserve, a recreation area, or community greenspace. The resources at your disposal will vary from park to park, but you are sure to find opportunities that will enhance and strengthen your lesson plans.

Entrance into all Cincinnati Parks is FREE, as is the use of their outdoor areas.

At developed parks you can expect to find picnic areas, shelters, playgrounds and natural areas that range from lawns to meadows to extensive woodlands with trail systems. Undeveloped preserves and greenspaces protect a variety of natural habitats; trails may or may not be present. Some special features and facilities are:

- a self-guided Tree Trail (Ault Park)
- arboretums and educational gardens (Mt. Airy Forest; Ault Park)
- the Presidential Tree Grove (Eden Park)
- overlooks of the city and its rivers (great for history & earth science)
- over a mile of natural river bank (Fernbank Park; Magrish Preserve)
- a park dedicated to international friendship (Theodore M. Berry International Friendship Park)
- sculpture and architecture both historic and modern
- historic structures, sites, monuments, and a pioneer cemetery
- frisbee golf courses (Burnet Woods, Mt. Airy Forest)

For brochures on the Arboretums, Overlooks, or Art and Architecture; for a list of Cincinnati Parks; or for general information on the facilities available at a particular park, call **352-4080**.

For more information on the natural habitats, species, or resources found in a particular park, call **321-6070**.

Park Naturalists encourage you to use your parks as educational resources for science, social studies and language arts. ***If you would like a Park Naturalist to attend a staff meeting to discuss how your school can best use a nearby Cincinnati Park, call the Nature Center nearest you or 321-6070.*** Naturalists are also willing to work with individual teachers, as time allows, helping them discover the outdoor learning center hidden in their neighborhood park.